

Our Ref 16/22681

**Contact:** Patrick Warren on 9725 0215

13 February 2017

NSW Department of Planning and Environment,  
GPO Box 39

Sydney NSW 2001

Attention: Luke Walton  
Director, Environment and Building Policy

[Luke.walton@planning.nsw.gov.au](mailto:Luke.walton@planning.nsw.gov.au)

Dear Mr Walton

**RE: SUBMISSION TO THE DRAFT COASTAL SEPP**

I refer to previous advice from the Department inviting comments on the abovementioned draft SEPP. Council officers have now reviewed the document with issues outlined in this submission.

In addition to detailed comments attached are aerial photographs relating to the sites mentioned in this submission to assist the Department with further preparation of the draft SEPP.

It is noted that the draft mapping to identify the coastal wetlands are based on guidelines associated with the existing SEPP 14 (Coastal wetlands). Council requests that the following amendments be included under further preparation of the draft SEPP maps.

1. There are 5 existing wetlands on Council owned land that meet the criteria of the SEPP that are recommended for inclusion in the SEPP. These wetlands include:
  - Stockdale Wetland, Abbotsbury: E 33°52'13.26 S 150° 52'02.95";
  - Florey Wetland, Mt Pritchard E 33° 54' 16.20" S 150° 54' 18.23";
  - De Freitas Wetland, Fairfield E 33° 52'24.30 S 150° 57'37.85";
  - Upper Prospect Creek, Smithfield E 33° 50' 16.64" S 150° 55' 01.97"
  - Orphan School Creek E 33° 52' 31.50" S 150° 55' 24.23"

2. Additionally Council requests the removal of the Orphan School Creek Wetland located at E 33° 52'08.13" S 150° 53' 31.34". This is based on the fact that the location site has been subdivided and developed into residential housing. Council considers the listing of this site to be an anomaly.

### **ADDITION OF WETLANDS INTO THE DRAFT NSW COASTAL MANAGEMENT STATE ENVIRONMENTAL PLANNING POLICY MAPS.**

It is noted that the criteria for inclusion of wetlands in the SEPP incorporates the following vegetation communities:

- Mangroves
- Saltmarshes
- Melaleuca Forests
- Casuarina Forests
- Sedgeland
- Brackish and Freshwater swamps
- West Meadows

The basis for inclusion of existing wetland areas (having regard to the above criteria) in Fairfield City within the Draft NSW Coastal Management State Environmental Planning Policy Maps is detailed below.

#### **Stockdale Wetlands Abbotsbury**

Stockdale wetland is dominated by Sedgeland (Please refer to attachment for Aerial image).

The Site is zoned E2 (Environmental conservation), which under the Fairfield LEP 2013 provides protection for sites that have ecological significance such as the Stockdale Wetland.

The Site is within the vicinity of Shale Plains woodland approximately 20 metres to the eastern border of the wetland, this is an ecologically endangered species with remanent value and high conservation significance.

The addition of this wetland is in keeping with Councils biodiversity strategy which aims to identify and protect ecologically endangered tree species. This strategy was completed as part of Councils comprehensive LEP preparation.

#### **Florey Wetland, Mt Pritchard**

Florey Wetland is dominated by Sedgeland and Freshwater swamp. (Please refer to attachment for Aerial image).

The Site is zoned E2 (Environmental conservation), which under Fairfield LEP 2013 provides measures for protection for sites that have ecological significance such as Florey Wetland.

Council's consultants EcoLogical Australia in their report entitled "Vegetation and Bushfire Prone Land Mapping Updated Final" has identified this wetland as containing Shale Plains Woodland which was identified as having a high conservation significance. See (Table 10 Page 18).

### **De Freitas Wetland, Fairfield**

De Freitas is dominated by Freshwater Swamp (Please refer to attachment for Aerial image).

The Site is zoned E2 (Environmental conservation), which under Fairfield LEP 2013 provides measures for protection for sites that have ecological significance such as De Freitas Wetland. The site is confirmed as having a moderate conservation value through Ecological Australia's report "Vegetation and Bushfire Prone Land Mapping Updated Final". See (Fig3: updated CSA results within Fairfield LGA)

### **Upper Prospect Creek, Smithfield**

Upper Prospect Creek Wetland (near Widemere Road) is dominated by Casuarina Forest (Please refer to attachment for Aerial image).

Site is zoned E2 (Environmental conservation) which under Fairfield LEP 2013 are sites that have ecological significance.

### **Orphan School Creek**

The Orphan School Creek is dominated by Casuarina Forest (Please refer to attachment for Aerial image). Please note that this Wetland is the same in name only as the below mentioned, Orphan School Creek listed below recommended to be removed.

Site is zoned E2 (Environmental conservation,) which under Fairfield local environmental plan are sites that have ecological significance such as the Orphan School Creek.

### **Justification for the Removal of Wetlands from the Draft NSW Coastal Management State Environmental Planning Policy**

The removal of the Orphan School Creek Wetland, Bossley Park: E 33° 52'08.13" S 150° 53' 31.34" is requested for removal as a coastal wetland. This is based on the fact that the site has now been subdivided and developed into housing. Please refer to attachment for Aerial Image).

### **Conclusion**

It is recognised that the Draft Coastal SEPP and Coastal Management Act 2016 are incremental in providing additional protection for existing areas of the natural environment with valuable ecological characteristics and functions.

It is therefore recommended that the abovementioned wetlands are included as Coastal wetlands based on the vegetation classification populating and dominating the Wetlands in question. It is also requested that Orphan School creek wetland be removed from the draft mapping as it has now been subdivided and developed into housing.

Please don't hesitate to contact the undersigned if you have any further questions in relation to Councils Submission.

Yours Faithfully

**Patrick Warren**

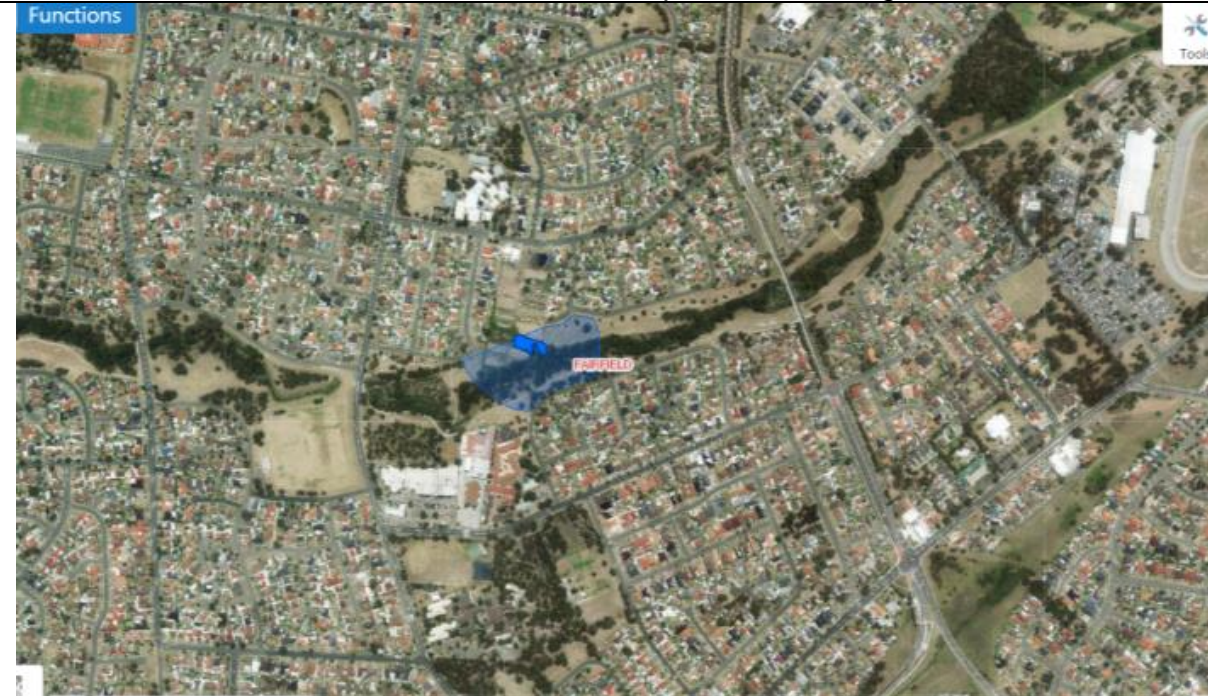
Strategic Land Use Planner | Strategic Land Use Planning  
City Development

PO Box 21, Fairfield NSW 1860  
P 9725 0215 | F 9725 4249  
[www.fairfieldcity.nsw.gov.au](http://www.fairfieldcity.nsw.gov.au)

Mapping Revisions Requested by Fairfield City Council for Draft Coastal Management SEPP – Natural Resources Team

Remove: Orphan School Creek Wetland, Bossley Park: E 33° 52'08.13" S 150° 53' 31.34"

Reason: Site has been subdivided and developed into housing.



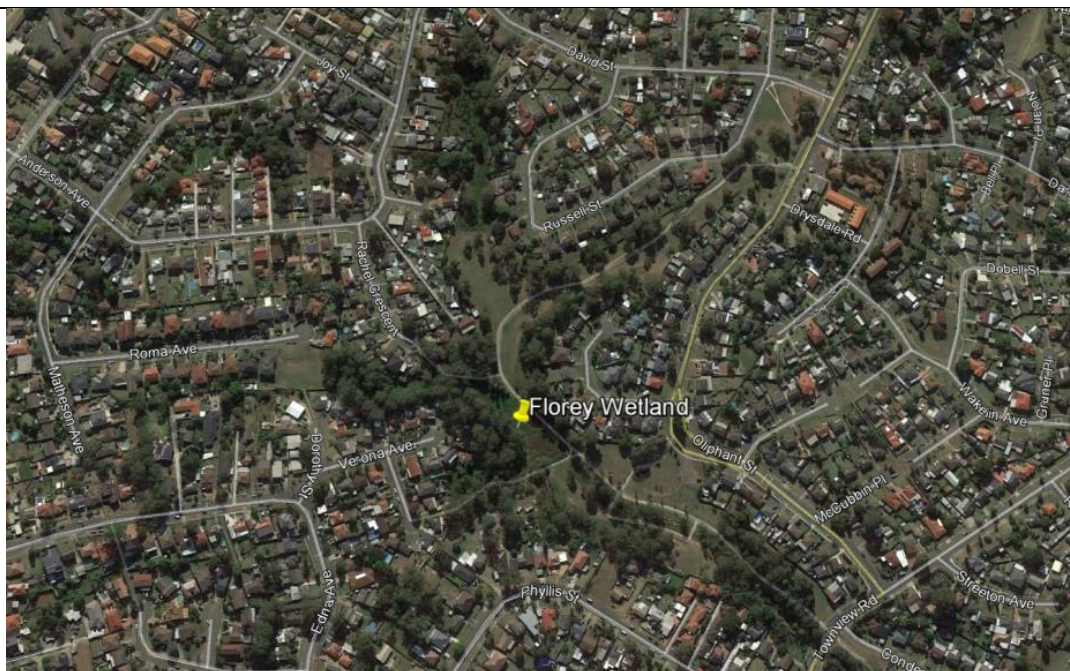
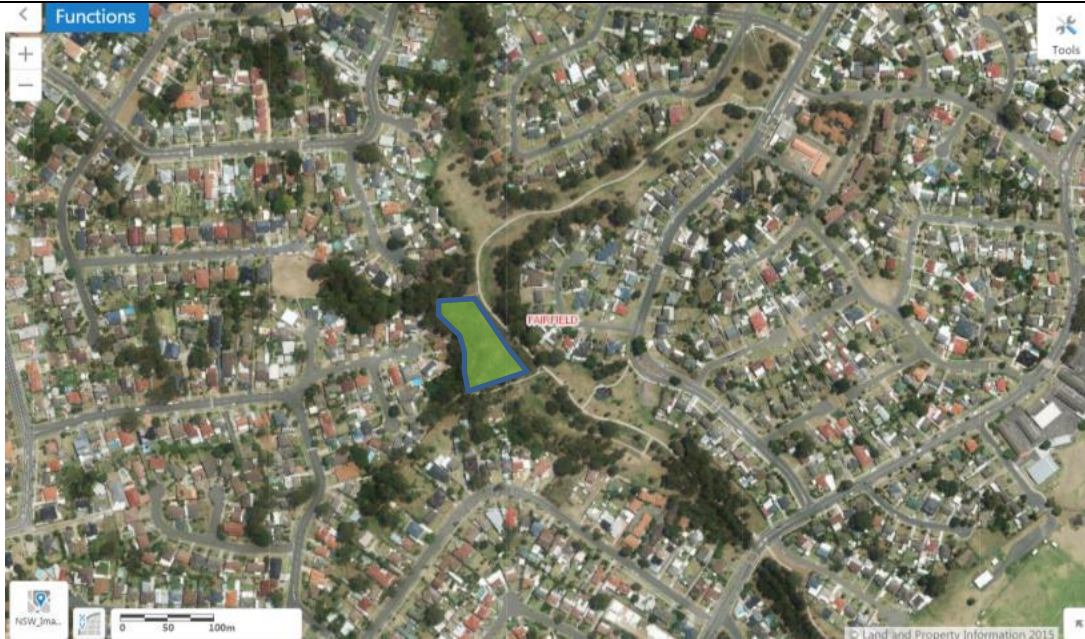
Add Stockdale Wetland, Abbotsbury: E 33°52'13.26 S 150° 52'02.95"  
Reason: Sedgeland (Constructed wetland)

- Site is zoned E2 (Environmental conservation, which under Fairfield local environmental plan for sites that have ecological significance such as the stockdale wetland.
- The Site is within the vicinity of Shale Plains woodland approximately 20 metres to the eastern border of the wetland, this is an ecologically endangered species with remanent value and high conservation significance.
- The addition of this wetland is in keeping with Councils biodiversity strategy which aims to identify and protect ecologically endangered tree species. This strategy was completed as part of Councils comprehensive LEP preparation.



Add: Florey Wetland, Mt Pritchard E 33° 54' 16.20" S 150° 54' 18.23"  
Reason: Freshwater swamp / sedgeland .

- Site is zoned E2 (Environmental conservation, which under Fairfield local environmental plan is in some cases done for sites that have ecological significance such as the Florey Wetland.
- Council's consultants EcoLogical Australia in their report entitled "Vegetation and Bushfire Prone Land Mapping Updater Final" has identified this wetland as containing Shale Plains Woodland which was identified as having a high conservation significance. See Fig 3 Page 17.



Add: De Freitas Wetland, Fairfield E 33° 52'24.30 S 150° 57'37.85"

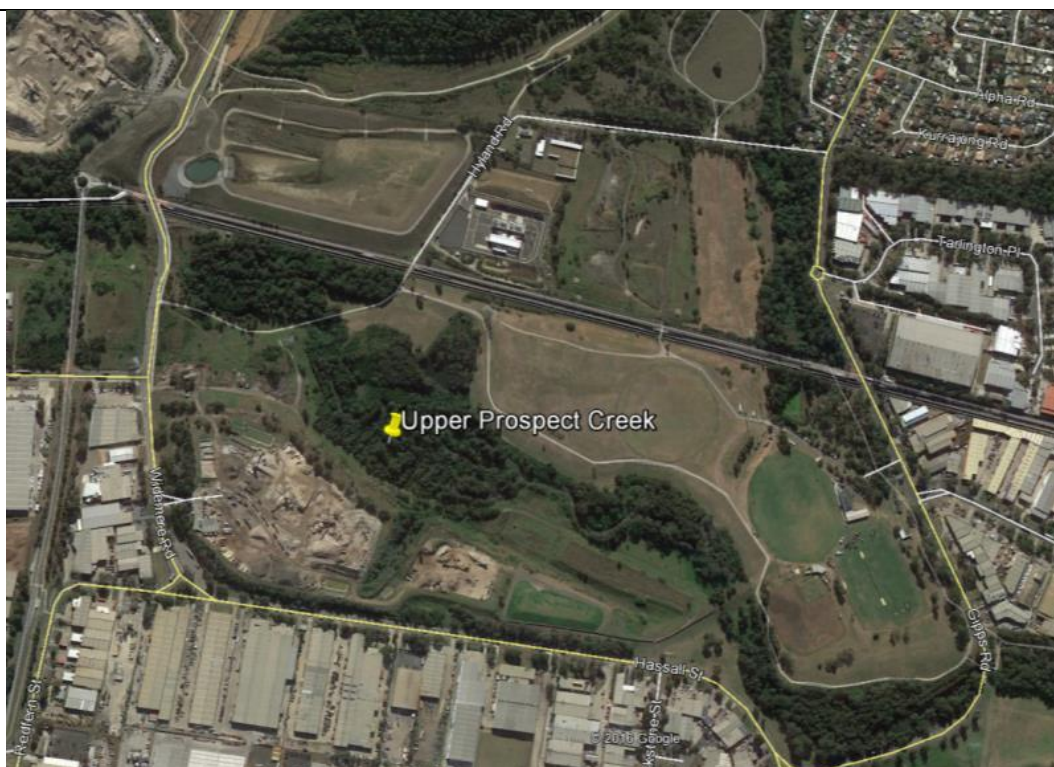
Reason: Freshwater swamp (has been reconstructed, but thought to be natural (present in 1943 aerials)).

- Site is zoned E2 (Environmental conservation, which under Fairfield local environmental plan is in some cases done for sites that have ecological significance such as the De Freitas Wetland.
- The site is confirmed as having a moderate conservation value through Ecological Australia's report "Vegetation and Bushfire Prone Land Mapping Updater Final".



Add Upper Prospect Creek (near Widemere Rd) Smithfield E 33° 50' 16.64" S 150° 55' 01.97" Reason: Casuarina forest

- Site is zoned E2 (Environmental conservation, which under Fairfield local environmental plan are sites that have ecological significance such as the upper prospect creek wetland.



Add: Orphan School Creek Casuarina Forest E 33° 52' 31.50" S 150° 55' 24.23"  
Reason: Casuarina Forest

